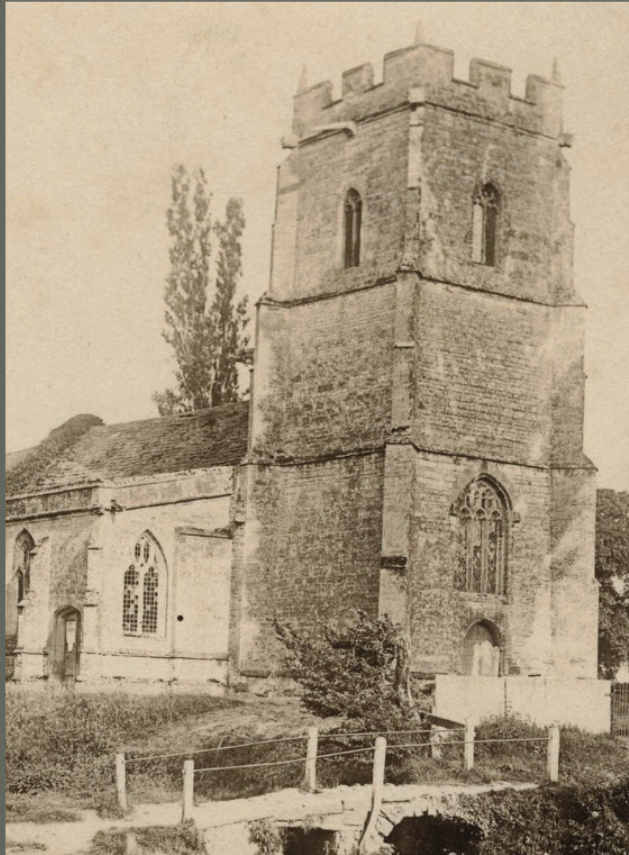




South Somerset Heritage Calendar

2022



JANUARY

The Church of St Mary, Marston Magna taken by Henry Stiby around 1880 together with a specially commissioned mug for Queen Elizabeth's Silver Jubilee and an example of Marston

Marble, a fossil found at Marston Magna sometimes used in fire hearths and is stated to be around 200 million years old.

SUN	MON	TUE	WED	THUR	FRI	SAT
						1
2	3	4	5	6	7	8
9	10	11	12	13	14	15
16	17	18	19	20	21	22
23	24	25	26	27	28	29
30	31	Notes				



FEBRUARY

Centenary of Yeovil Corporation July 1954 Church Parade with the Band of Her Majesty's Marines Portsmouth followed by a contingent from H.M.S. "Heron" Royal Naval Air Station, Yeovilton.

The wooden plaque highlights H.M.S. Hesperus an H-Class destroyer adopted by Yeovil & District in National Savings "Warship Week" in February 1942, when local people raised over £300,000 towards the ship's building costs.

SUN	MON	TUE	WED	THUR	FRI	SAT
		1	2	3	4	5
6	7	8	9	10	11	12
13	14	15	16	17	18	19
20	21	22	23	24	25	26
27	28	Notes				



MARCH

Yeovil Baptist Sunday School procession possibly in Hendford celebrating Robert Raikes' first Sunday School in 1780. Robert Raikes (the Younger) 1736-1811 from Gloucester promoted Sunday school free education as a form of social reform for

young children. The ceremonial trowel was presented to W. Bide Esq, Mayor of Yeovil when laying the foundation stone of Trinity Parish Infant and Sunday Schools, 160 years ago on March 4, 1862.

SUN	MON	TUE	WED	THUR	FRI	SAT
		1	2	3	4	5
6	7	8	9	10	11	12
13	14	15	16	17	18	19
20	21	22	23	24	25	26
27	28	29	30	31		



G.W.R VIADUCT, SOMERTON, SOM^{SE}.
WITH CORNISH RIVIERA EXPRESS & RAIL MOTOR.

Somerton Viaduct with the express going west and the local train, known as 'The Bucket' going east. The line opened in July 1906; construction started in 1903. A quilt of 200 blue linen squares with a painted central section of Somerton Market Cross made as a fund-raiser for a good cause. The blocks that surround the picture have 100 embroidered signatures of the

people who donated, and the embroidery was probably done by children in Monteclefe School for a Loan and Industrial Exhibition of 1892. The signatures range from local families 'Searle and Nutt' to local gentry 'Dickinson and Pinney.' Henry Strong was the Vicar of Somerton. (Gratitude to the Marmaduke Cradock Trust)

SUN	MON	TUE	WED	THUR	FRI	SAT
Notes					1	2
3	4	5	6	7	8	9
10	11	12	13	14	15	16
17	18	19	20	21	22	23
24	25	26	27	28	29	30



Yeovil's first 'modern' hospital was opened in 1872 at the 'Five Cross Roads,' where Ilchester Road, Mudford Road, Preston Road, Kingston and Higher Kingston all meet. When the Yeovil District Hospital was opened in 1923, "Fiveways" served as a maternity home up until 1968. The present hospital was opened in 1973.

The Late Phillip Bulson, a former pupil of Yeovil School, Mudford Road was stated to be the first baby born in the Corporation New Maternity Home and to mark this he was presented with a silver christening cup and wrote: 'What a fortunate way to start a life!' The inscription reads: "Presented by the Yeovil Corporation to P.S. Bulson May 27th 1925 being the first baby born in the Corporation New Maternity Home."

SUN	MON	TUE	WED	THUR	FRI	SAT
1	2	3	4	5	6	7
8	9	10	11	12	13	14
15	16	17	18	19	20	21
22	23	24	25	26	27	28
29	30	31	Notes			



Greeting.

LEWANIKA

KING OF THE BAROTSE

Long Life! Happiness! A Pleasant Visit!

June 5, 1902.

Printed in the King's Presence
at the "Chronicle" Works, Yeovil.

King Litunga Lewanika of Barotseland (now Zambia) was in Britain for the Coronation of Edward VII. During the visit on 5 June 1902 he is shown leaving the old Pulman's Weekly & News Co Ltd building on the corner of Middle Street and

Newton Road to lay the foundation stone of the new Western Gazette Premises. A Greeting Memento of the King's visit was produced in gold leaf by the 'Chronicle' Works, Yeovil. (Gratitude to the Western Gazette)

SUN

MON

TUE

WED

THUR

FRI

SAT

Notes

1

2

3

4

5

6

7

8

9

10

11

12

13

14

15

16

17

18

19

20

21

22

23

24

25

26

27

28

29

30

0206 SINGLE - 2nd
2nd - SINGLE
Yeovil Town to Yeovil Town
Langport West Langport West
LANGPORT WEST
via Martock
(W) 3/3 Fare 3/3 (W)
0206
For conditions see over For conditions see over



Langport around 1960 with Mounter's Radio and Repair Shop,
together with a Second Class rail ticket from Yeovil Town

Station to Langport West (from Pen Mill to Taunton) on the
day the line closed to passengers in 1966.

SUN	MON	TUE	WED	THUR	FRI	SAT
					1	2
3	4	5	6	7	8	9
10	11	12	13	14	15	16
17	18	19	20	21	22	23
24	25	26	27	28	29	30
31	Notes					

Denners OF YEOVIL

GOLDEN JUBILEE

1926 to 1976



Denner's window display of holiday garments in 1926. This shows the platform of a Railway Station with the passengers waiting for respective trains while the 'cardboard cut out' porter is lifting the luggage onto the trolley. The Golden Jubilee brochure celebrates 50 years since the Denner's business was purchased by Stanley Chapman.

SUN	MON	TUE	WED	THUR	FRI	SAT
	1	2	3	4	5	6
7	8	9	10	11	12	13
14	15	16	17	18	19	20
21	22	23	24	25	26	27
28	29	30	31	Notes		



SEPTEMBER



A photograph of a painting by Francis Henry Newbery depicting assembly of Parliamentary Forces at St. John's Church, Yeovil on 7 September 1642, during the early stages of the First English Civil War, courtesy of Leslie Brooke. The original painting was destroyed by fire in 1935.

A Cromwellian Sword, a relic of the Battle of Babylon Hill, when the Earl of Bedford's Roundheads forced back Sir Ralph Hopton's Cavaliers to Sherborne.

SUN

MON

TUE

WED

THUR

FRI

SAT

Notes

1

2

3

4

5

6

7

8

9

10

11

12

13

14

15

16

17

18

19

20

21

22

23

24

25

26

27

28

29

30



OCTOBER

The Borough of Yeovil Swimming Pool & Public Baths in Felix Place were opened in October 1962. The record of the building shows 'north end of construction' on a hot day 31 August 1961, together with a swimming pool tie and a 'good progress for swimming'

school certificate from 1926. The certificate reflects Yeovil's first swimming baths erected in 1884 on this site and subsequently enlarged over the years. This had 'one large swimming bath and five private baths, two for ladies and three for gentleman.'

SUN	MON	TUE	WED	THUR	FRI	SAT
						1
2	3	4	5	6	7	8
9	10	11	12	13	14	15
16	17	18	19	20	21	22
23	24	25	26	27	28	29
30	31	Notes				

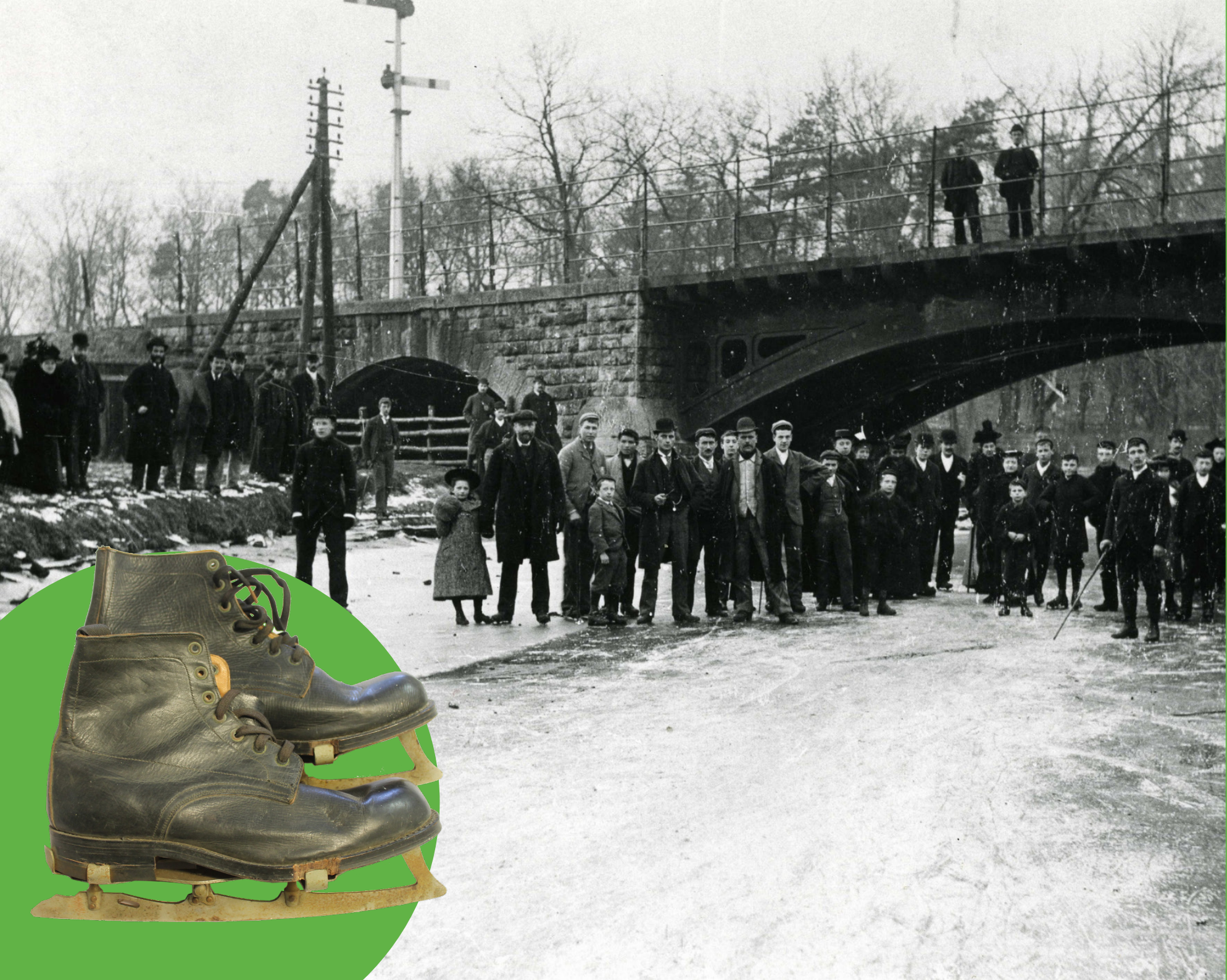


NOVEMBER

SSHIC
South Somerset Heritage Collection

This aerial view of Houndstone Camp from around 1950 shows the Globe Cinema in the centre with a Women's Royal Army Corps tea cup, part of W.R.A.C Dinner Service, used for dinners and AGM's when stationed at Houndstone.

SUN	MON	TUE	WED	THUR	FRI	SAT
		1	2	3	4	5
6	7	8	9	10	11	12
13	14	15	16	17	18	19
20	21	22	23	24	25	26
27	28	29	30	Notes		



DECEMBER

Towards the end of 1891 the River Yeo became so frozen as to support skaters and spectators alike on the thick ice at Cricketsham Bridge, which then carried the railway line

between the Town Station and Yeovil Junction Station. The boots made by 'Pelikan' with 'cut in' skates we believe date to around 1900 to 1920.

SUN	MON	TUE	WED	THU	FRI	SAT
				1	2	3
4	5	6	7	8	9	10
11	12	13	14	15	16	17
18	19	20	21	22	23	24
25	26	27	28	29	30	31



CHAC holds 5,000 images and 30,000 artefacts covering all aspects of South Somerset's heritage. Photographs of Yeovil and South Somerset are always gratefully received as donations. To view the collection - which is open to the public by appointment only - or if the photographs prompt any memories, please contact us.

Contact us



01935 462855



heritage.services@southsomerset.gov.uk



South Somerset Heritage Collection, SSDC Luton Depot
7 Artillery Road, Luton, Yeovil, Somerset, BA22 8RP



2023 Key Dates:

- Sunday 1 January - New Year's Day
- Saturday 11 February - School Half Term starts
- Tuesday 14 February - Valentines Day
- Tuesday 29 May - Spring Bank Holiday
- Monday 1 May - May Bank Holiday
- Monday 29 May - Spring Bank Holiday
- Sunday 18 June - Father's Day
- Tuesday 21 February - Shrove Tuesday / Pancake Day
- Wednesday 22 February - Ash Wednesday
- Sunday 19 March - Mother's Day
- Sunday 26 March - Daylight Saving Time
- Sunday 2 April - Palm Sunday
- Friday 7 April - Good Friday
- Sunday 9 April - Easter Sunday
- Sunday 31 December - New Year's Eve

Month	Day	1	2	3	4	5	6	7	8	9	10	11	12	13	14	15	16	17	18	19	20	21	22	23	24	25	26	27	28	29	30	31	
JAN	S M T W T F S		1	2	3	4	5	6	7	8	9	10	11	12	13	14	15	16	17	18	19	20	21	22	23	24	25	26	27	28	29	30	31
FEB	S M T W T F S		1	2	3	4	5	6	7	8	9	10	11	12	13	14	15	16	17	18	19	20	21	22	23	24	25	26	27	28			
MAR	S M T W T F S		1	2	3	4	5	6	7	8	9	10	11	12	13	14	15	16	17	18	19	20	21	22	23	24	25	26	27	28	29	30	31
APR	S M T W T F S		1	2	3	4	5	6	7	8	9	10	11	12	13	14	15	16	17	18	19	20	21	22	23	24	25	26	27	28	29	30	
MAY	S M T W T F S		1	2	3	4	5	6	7	8	9	10	11	12	13	14	15	16	17	18	19	20	21	22	23	24	25	26	27	28	29	30	31
JUN	S M T W T F S		1	2	3	4	5	6	7	8	9	10	11	12	13	14	15	16	17	18	19	20	21	22	23	24	25	26	27	28	29	30	31
JUL	S M T W T F S		1	2	3	4	5	6	7	8	9	10	11	12	13	14	15	16	17	18	19	20	21	22	23	24	25	26	27	28	29	30	31
AUG	S M T W T F S		1	2	3	4	5	6	7	8	9	10	11	12	13	14	15	16	17	18	19	20	21	22	23	24	25	26	27	28	29	30	31
SEP	S M T W T F S		1	2	3	4	5	6	7	8	9	10	11	12	13	14	15	16	17	18	19	20	21	22	23	24	25	26	27	28	29	30	
OCT	S M T W T F S		1	2	3	4	5	6	7	8	9	10	11	12	13	14	15	16	17	18	19	20	21	22	23	24	25	26	27	28	29	30	31
NOV	S M T W T F S		1	2	3	4	5	6	7	8	9	10	11	12	13	14	15	16	17	18	19	20	21	22	23	24	25	26	27	28	29	30	
DEC	S M T W T F S		1	2	3	4	5	6	7	8	9	10	11	12	13	14	15	16	17	18	19	20	21	22	23	24	25	26	27	28	29	30	31



Front cover:

Proclamation of H.M. Queen Elizabeth II with crowds in the Borough standing in front of Hill Sawtell and Frederick Taylor shops, 1952.